

Image may differ from product. See technical specification for details.

## UCFL 209/H

### Oval flange ball bearing unit with extended inner ring and set screw locking, cast iron housing, JIS

These oval flanged ball bearing units are compliant with JIS standards. They consist of an insert bearing, with an extended inner ring and set screw locking, and are suitable for applications where the direction of rotation is constant or alternating. The bearing is mounted in a cast iron housing, which can be bolted to a machine wall or frame. Ball bearing units can accommodate moderate initial misalignment, but normally do not permit axial displacement.

- Resist high levels of contamination
- Designed for high temperatures and speeds
- Accommodate relatively heavy loads
- Cost-effective

# Overview

## Dimensions

Shaft diameter	45 mm
Housing overall width	35 mm
Width, total	51.2 mm
Centre distance between bolt holes	148 mm
Bearing width, total	49.2 mm

## Properties

Housing type	Flanged
Flanged housing type	Oval
Number of bolt holes for fasteners	2
Fastening bolt hole type	Plain
Retaining feature, inner ring	Set screws
Bore type	Cylindrical
Rubber seating ring	Without
Material, housing	Cast iron
Material, bearing	Bearing steel
Coating	Without
Sealing, bearing	Seal and flinger on both sides
Sealing type	Contact, standard
Sealing, unit	Optional end cover
Lubricant	Grease
Relubrication hole	With
Grease fitting	With

## Performance

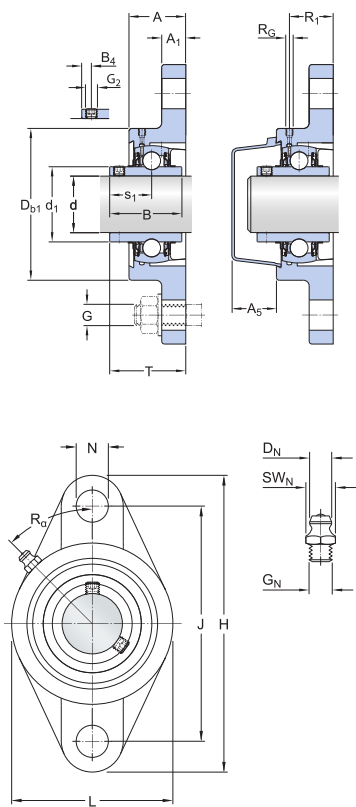
Basic dynamic load rating	33.2 kN
Basic static load rating	21.6 kN
Limiting speed	3 400 r/min
Note	Limiting speed with shaft tolerance h6

## Logistics

Product net weight	1.75 kg
eClass code	23-05-16-02
UNSPSC code	31171536

Technical specification

Compliance with standard	JIS
Purpose specific	For material handling applications
Material, housing	Cast iron
Sealing, bearing	Seal and flinger on both sides
Sealing type, bearing	Contact, standard
Sealing, unit	Optional end cover
Coating	Without



Dimensions

d	45 mm	Bore diameter
d1	≈ 56.8 mm	Outer diameter of inner ring
A	35 mm	Width of housing
A1	15 mm	Flange width
A5	26.5 mm	Width including end cover
B	49.2 mm	Width of inner ring
B4	8 mm	Distance from locking device side face to thread centre
Db1	108 mm	Top external diameter
H	188 mm	Overall height
J	148 mm	Distance between attachment bolts
L	108 mm	Overall length
N	19 mm	Diameter of attachment bolt hole
s1	30.2 mm	Distance from locking device side face to raceway centre
T	51.2 mm	Overall width

THREADED HOLE

RG	1/4-28 UNF	Housing thread for grease fitting
R1	26 mm	Axial position of the housing thread

	R <sub>α</sub>	45 °	Angular position of the housing thread
--	----------------	------	----------------------------------------

GREASE FITTING

D <sub>N</sub>	6.6 mm	Diameter of head sphere of grease fitting
SW <sub>N</sub>	7.94 mm	Hexagonal key size for the grease fitting
G <sub>N</sub>	1/4-28 UNF	Thread of grease fitting

Calculation data

Basic dynamic load rating	C	33.2 kN
Basic static load rating	C <sub>0</sub>	21.6 kN
Fatigue load limit	P <sub>u</sub>	0.915 kN
Limiting speed		3 400 r/min
		Limiting speed with shaft tolerance h6

Mass

Mass bearing unit	1.8 kg
-------------------	--------

Mounting information

Set screw	G <sub>2</sub>	M8x1
Hexagonal key size for set screw		4 mm
Recommended tightening torque for set screw		6.5 N·m
Recommended diameter for attachment bolts, mm	G	16 mm
Recommended diameter for attachment bolts, inch	G	0.625 in

Compatible products

Spare part

Insert bearing with set screw locking and extended inner ring	<a href="#">YAR 209-2F</a>
---------------------------------------------------------------	----------------------------

Recommended product

End cover for bearing units	<a href="#">ECY 209</a>
-----------------------------	-------------------------