

Image may differ from product. See technical specification for details.

SY 30 LF

Pillow block ball bearing unit with extended inner ring and SKF ConCentra locking, cast iron, ISO standards

Pillow (plummer) block ball bearing units consist of an insert bearing mounted in a cast iron housing that can be bolted to a support surface. It has an inner ring extended on both sides and is locked onto the shaft by a SKF ConCentra locking, creating a true concentric tight fit, and setting the correct internal clearance within the bearing, and making it easy to mount.

- Strong
- Ready to mount
- Lubricated and sealed bearing
- Quick locking onto the shaft
- Cost-effective

Overview

Dimensions

Shaft diameter	30 mm
Centre height (pillow block)	42.9 mm
Housing overall width	40 mm
Centre distance between bolt holes	117.5 mm
Bearing width, total	37.2 mm

Properties

Housing type	Pillow block
Number of bolt holes for fasteners	2
Fastening bolt hole type	Plain
Retaining feature, inner ring	SKF ConCentra
Bore type	Cylindrical
Rubber seating ring	Without
Material, housing	Cast iron
Material, bearing	Bearing steel
Coating	Without
Sealing, bearing	Seal and flinger on both sides
Sealing type	Contact, standard
Sealing, unit	Optional end cover
Lubricant	Grease
Relubrication hole	With
Grease fitting	With

Performance

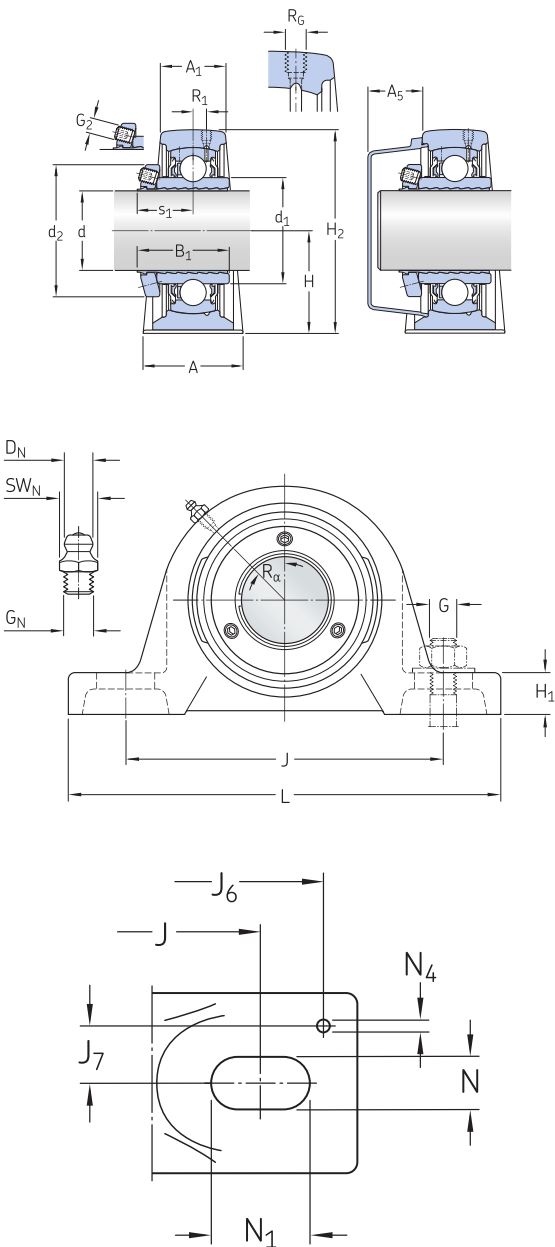
Basic dynamic load rating	19.5 kN
Basic static load rating	11.2 kN
Limiting speed	6 300 r/min

Logistics

Product net weight	1.06 kg
eClass code	23-05-08-02
UNSPSC code	31171536

Technical specification

Compliance with standard	ISO
Purpose specific	For material handling applications, For air handling applications
Material, housing	Cast iron
Sealing, bearing	Seal and flinger on both sides
Sealing type, bearing	Contact, standard
Sealing, unit	Optional end cover
Coating	Without



Dimensions

d	30 mm	Bore diameter
d ₁	≈ 39.7 mm	Shoulder diameter of inner ring
d ₂	48 mm	Outside diameter of locking ring
A	40 mm	Base width
A ₁	25 mm	Top width
A ₅	22.5 mm	Standout of end cover
B	28 mm	Width of inner ring
B ₁	37.2 mm	Overall bearing width
H	42.9 mm	Height of spherical seat centre
H ₁	17 mm	Foot height
H ₂	82 mm	Overall height
J	117.5 mm	Distance between attachment bolts
J	max. 127 mm	Distance between attachment bolts
J	min. 108 mm	Distance between attachment bolts
L	152 mm	Overall length
N	14 mm	Diameter of attachment bolt hole
N ₁	23.5 mm	Length of attachment bolt hole
s ₁	23.2 mm	Distance from locking device side face to raceway centre

Values specified for B₁ and s₁ are approximate and before the set screw is tightened (sleeve and inner ring bore at starting position).

THREADED HOLE

R _G	1/4-28 UNF	Housing thread for the grease fitting
R ₁	3 mm	Axial position of the housing thread
R _α	45 °	Angular position of the housing thread

GREASE FITTING

D _N	6.5 mm	Diameter of head sphere of grease fitting
SW _N	7 mm	Hexagonal key size for the grease fitting
G _N	1/4-28 SAE-LT	Thread of grease fitting

DOWEL PINS

J ₆	140 mm	Distance of dowel pins
J ₇	14 mm	Axial offset of dowel pins
N ₄	4 mm	Recommended diameter for dowel pins

Calculation data

Basic dynamic load rating	C	19.5 kN
Basic static load rating	C ₀	11.2 kN
Fatigue load limit	P _u	0.475 kN
Limiting speed		6 300 r/min

Mass

Mass bearing unit	1.05 kg
-------------------	---------

Mounting information

Set screw	G ₂	M5
Hexagonal key size for set screw		2.54 mm
Recommended tightening torque for set screw		4.2 N·m
Recommended diameter for attachment bolts, mm	G	12 mm
Recommended diameter for attachment bolts, inch	G	0.5 in

Compatible products

Component

Pillow block housing for insert bearings, cast iron, ISO standards	SY 506 M
--	--------------------------

Insert bearing with SKF ConCentra locking	YSP 206 SB-2F
---	-------------------------------

Recommended product

End cover for bearing units	ECY 206
-----------------------------	-------------------------