

Image may differ from product. See technical specification for details.

SY 1. TF

Pillow block ball bearing unit with extended inner ring and set screw locking, cast iron, ISO standards

Pillow (plummer) block ball bearing units consist of an insert bearing mounted in a cast iron housing that can be bolted to a support surface. This variant is suitable for applications with both constant and alternating directions of rotation. It has an inner ring extended on both sides and is locked onto the shaft by tightening a set screw on the inner ring, making it easy to mount.

- Strong
- Ready to mount
- Lubricated and sealed bearing
- Quick locking onto the shaft
- Cost-effective

Overview

Dimensions

| | |
|------------------------------------|---------|
| Shaft diameter | 25.4 mm |
| Centre height (pillow block) | 36.5 mm |
| Housing overall width | 36 mm |
| Centre distance between bolt holes | 102 mm |
| Bearing width, total | 34.1 mm |

Properties

| | |
|------------------------------------|--------------------------------|
| Housing type | Pillow block |
| Number of bolt holes for fasteners | 2 |
| Fastening bolt hole type | Plain |
| Retaining feature, inner ring | Set screws |
| Bore type | Cylindrical |
| Rubber seating ring | Without |
| Material, housing | Cast iron |
| Material, bearing | Bearing steel |
| Coating | Without |
| Sealing, bearing | Seal and flinger on both sides |
| Sealing type | Contact, standard |
| Sealing, unit | Optional end cover |
| Lubricant | Grease |
| Relubrication hole | With |
| Grease fitting | With |

Performance

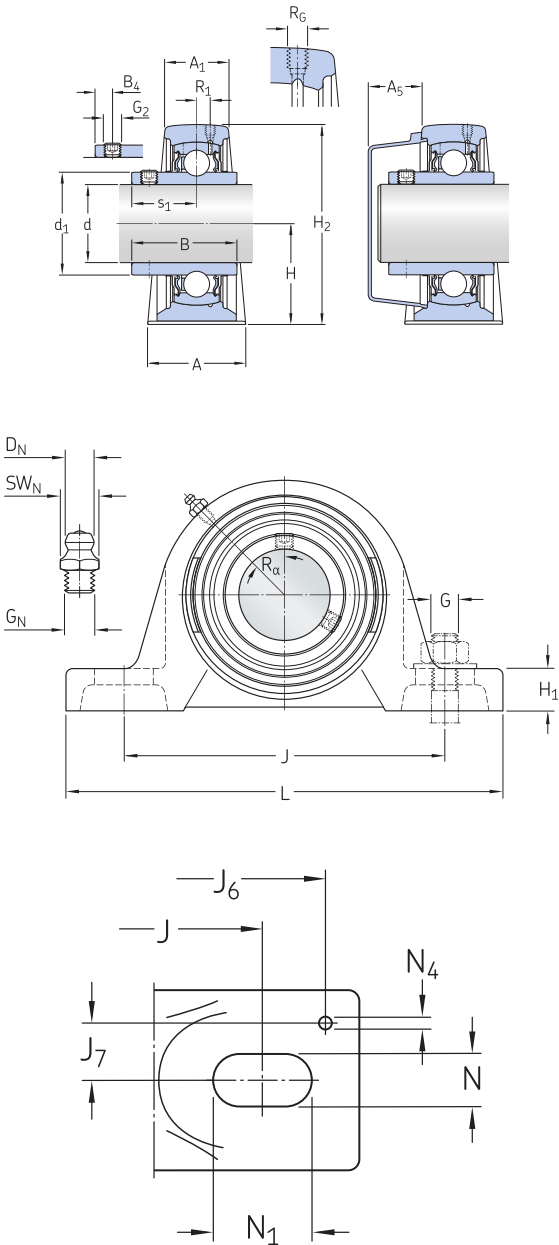
| | |
|---------------------------|--|
| Basic dynamic load rating | 14 kN |
| Basic static load rating | 7.8 kN |
| Limiting speed | 7 000 r/min |
| Note | Limiting speed with shaft tolerance h6 |

Logistics

| | |
|--------------------|-------------|
| Product net weight | 0.738 kg |
| eClass code | 23-05-08-02 |
| UNSPSC code | 31171536 |

Technical specification

| | |
|--------------------------|------------------------------------|
| Compliance with standard | ISO |
| Purpose specific | For material handling applications |
| Material, housing | Cast iron |
| Sealing, bearing | Seal and flinger on both sides |
| Sealing type, bearing | Contact, standard |
| Sealing, unit | Optional end cover |
| Coating | Without |



Dimensions

| | | |
|----------------|-------------|--|
| d | 25.4 mm | Bore diameter |
| d ₁ | ≈ 33.74 mm | Shoulder diameter of inner ring |
| A | 36 mm | Base width |
| A ₁ | 22 mm | Top width |
| A ₅ | 20.5 mm | Standout of end cover |
| B | 34.1 mm | Width of inner ring |
| B ₄ | 5 mm | Distance from locking device side face to thread centre |
| H | 36.5 mm | Height of spherical seat centre |
| H ₁ | 16 mm | Foot height |
| H ₂ | 70 mm | Overall height |
| J | 102 mm | Distance between attachment bolts |
| J | max. 110 mm | Distance between attachment bolts |
| J | min. 94 mm | Distance between attachment bolts |
| L | 130 mm | Overall length |
| N | 11.5 mm | Diameter of attachment bolt hole |
| N ₁ | 19.5 mm | Length of attachment bolt hole |
| s ₁ | 19.8 mm | Distance from locking device side face to raceway centre |

THREADED HOLE

| | | |
|----------------|------------|--|
| R _G | 1/4-28 UNF | Housing thread for the grease fitting |
| R ₁ | 2 mm | Axial position of the housing thread |
| R _α | 45 ° | Angular position of the housing thread |

GREASE FITTING

| | | |
|-----------------|---------------|---|
| D _N | 6.5 mm | Diameter of head sphere of grease fitting |
| SW _N | 7 mm | Hexagonal key size for the grease fitting |
| G _N | 1/4-28 SAE-LT | Thread of grease fitting |

DOWEL PINS

| | | |
|----------------|--------|-------------------------------------|
| J ₆ | 120 mm | Distance of dowel pins |
| J ₇ | 13 mm | Axial offset of dowel pins |
| N ₄ | 4 mm | Recommended diameter for dowel pins |

Calculation data

| | | |
|---------------------------|----------------|--|
| Basic dynamic load rating | C | 14 kN |
| Basic static load rating | C ₀ | 7.8 kN |
| Fatigue load limit | P _u | 0.335 kN |
| Limiting speed | | 7 000 r/min |
| | | Limiting speed with shaft tolerance h6 |

Mass

| | |
|-------------------|---------|
| Mass bearing unit | 0.72 kg |
|-------------------|---------|

Mounting information

| | | |
|---|----------------|------------|
| Set screw | G ₂ | 1/4-28 UNF |
| Hexagonal key size for set screw | | 3.175 mm |
| Recommended tightening torque for set screw | | 4 N·m |
| Recommended diameter for attachment bolts, mm | G | 10 mm |
| Recommended diameter for attachment bolts, inch | G | 0.375 in |

Compatible products

Component

| | |
|--|--------------------------|
| Pillow block housing for insert bearings, cast iron, ISO standards | SY 505 M |
|--|--------------------------|

| | |
|---|--------------------------------|
| Insert bearing with set screw locking and extended inner ring | YAR 205-100-2F |
|---|--------------------------------|

Recommended product

| | |
|-----------------------------|-------------------------|
| End cover for bearing units | ECY 205 |
|-----------------------------|-------------------------|