



Image may differ from product. See technical specification for details.

C 2315

CARB toroidal roller bearing

CARB toroidal roller bearings are unique: as well as accommodating misalignment without increased stress levels, they also provide frictionless axial movement within the bearing in the non-locating position in self-aligning bearing arrangements. Being SKF Explorer bearings, they can accommodate higher load levels and provide significantly extended service life.

- Accommodate misalignment and axial displacement within the bearing
- High radial load carrying capacity
- Provide frictionless axial movement
- Long bearing system life
- Reduce noise and vibration levels

Overview

Dimensions

Bore diameter	75 mm
Outside diameter	160 mm
Width	55 mm

Properties

Number of rows	1
Locating feature, bearing outer ring	Without
Bore type	Cylindrical
Cage	Sheet metal
Radial internal clearance	CN
Tolerance class	Normal
Sealing	Without
Lubricant	None
Relubrication feature	Without

Performance

Basic dynamic load rating	425 kN
Basic static load rating	465 kN
Reference speed	3 600 r/min
Limiting speed	4 800 r/min
SKF performance class	SKF Explorer

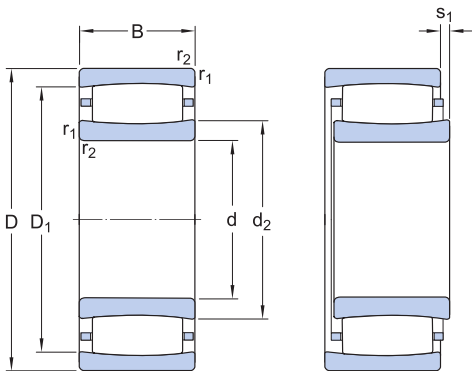
Logistics

Product net weight	5.22 kg
eClass code	23-05-09-13
UNSPSC code	31171505

Technical specification

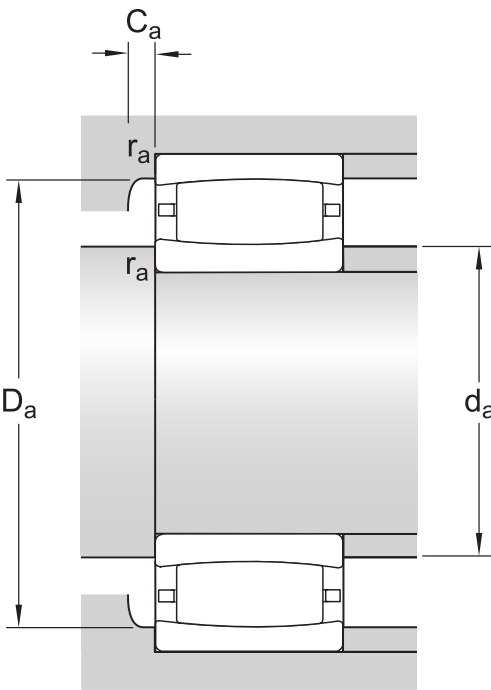
Bore type

Cylindrical



Dimensions

d	75 mm	Bore diameter
D	160 mm	Outside diameter
B	55 mm	Width
d ₂	≈ 98.5 mm	Shoulder diameter of inner ring
D ₁	≈ 137 mm	Shoulder or recess diameter of outer ring
s ₁	max. 13.1 mm	Permissible axial displacement
r _{1,2}	min. 2.1 mm	Chamfer dimension



Abutment dimensions

d _a	min. 87 mm	Diameter of shaft abutment
d _a	max. 113 mm	Diameter of shaft abutment
D _a	min. 126 mm	Diameter of housing abutment
D _a	max. 148 mm	Abutment diameter housing
C _a	min. 2.2 mm	Minimum width of space required in housing
r _a	max. 2 mm	Radius of fillet

- A negative value for C_a is theoretical.

Calculation data

SKF performance class		SKF Explorer
Basic dynamic load rating	C	425 kN
Basic static load rating	C ₀	465 kN
Fatigue load limit	P _u	52 kN
Reference speed		3 600 r/min
Limiting speed		4 800 r/min
Misalignment factor	k ₁	0.103

Internal clearance factor	k_2	0.107
---------------------------	-------	-------

Mass

Mass	5.3 kg
------	--------