

Combination LED Beacon with Multi-Tone Sounder/Horn

Your benefits

The WERMA LED Beacon with a siren or horn provides safety and security by delivering reliable fault alarms over medium distances. The IP65 protection rating is suitable for outdoor applications.

- Multiple light configurations for different purposes and distances (some with partial external triggering)
- Simple installation
- Tamper-proof when installed
- Multiple visual and audible escalation levels possible
- Clear all-round visibility thanks to the OmniVIEW lens; no blind spots
- Multi-tone siren with up to 32 tones available for maximum flexibility

Typical applications

Fault signalling

- In areas with high ambient noise levels
- On machinery and equipment
- In building service systems (e.g. gas alarm)
- In the event of e.g. overload on mobile cranes and similar

Installation options

- Base mounting
- Wall mounting
- Tube mounting

Features

- Long life and energy-saving LEDs



Optical-audible combinations



Quick and simple wall mounting
without additional accessories
thanks to integrated mounting
bracket (432)



Mounting holes integrated into the product rim allow easy mounting without having to remove the lens

| | Base mounting (430) | Wall mounting (432) |
|--------------------------|---|---------------------|
| Dimensions (Ø x Height): | 146 mm x 171 mm | 134 mm x 235 mm |
| Housing: | PC/ABS-Blend, black | PC/ABS-Blend, grey |
| Lens: | PC, transparent | |
| Connection: | Screw terminal 0.5-1.5 mm ² | |
| Cable entry: | Cable diameter max. 13 mm | |
| Tone type and frequency: | 32 tones adjustable, see table on page 210 | |
| Life duration: | Up to 50,000 hrs (LED), up to 5,000 hrs (Multi-tone Sounder) | |
| Installation position: | Sound outlet facing downwards | |
| Fixing: | Base mounting (430), Wall mounting (432) Tube mounting (accessory, only for 430) | |
| Voltage: | 24 V AC/DC | 115-230 V AC* |
| Current consumption MTS: | 190 mA | 55 mA |
| Current consumption LED: | 350 mA | 100 mA |
| | 230 mA (red) | 80 mA (red) |
| Base mounting | | |
| red | 430 100 75 | 430 100 60 |
| yellow | 430 300 75 | 430 300 60 |
| Wall mounting | | |
| red | 432 100 75 | 432 100 60 |
| yellow | 432 300 75 | 432 300 60 |

*Current consumption at 115 V

| | |
|--|------------|
| Adaptor for tube mounting, plastic, for tube Ø 25 mm | 975 430 01 |
|--|------------|

Technical drawings of the 430/431 and 430/433 wheel models.

430/431 Dimensions:

- Top View: Circular rim with a diameter of $\varnothing 145$. The distance between the center and the rim edge is $\varnothing 158$. The angle between the center and the rim edge is 120° . The distance between the center and the rim edge is 38 .
- Side View: Total height is 171 . The base diameter is $\varnothing 146$. The base thickness is 4 .

430/433 Dimensions:

- Top View: Circular rim with a diameter of $\varnothing 134$. The distance between the center and the rim edge is $\varnothing 65$.
- Side View: Total height is 172 . The base diameter is $\varnothing 63$. The base thickness is 4 .



431/433 LED Permanent / Flashing / EVS / Multi-Tone Sounder Combination



Multi-functional LED beacon:
3 light effects can be externally triggered

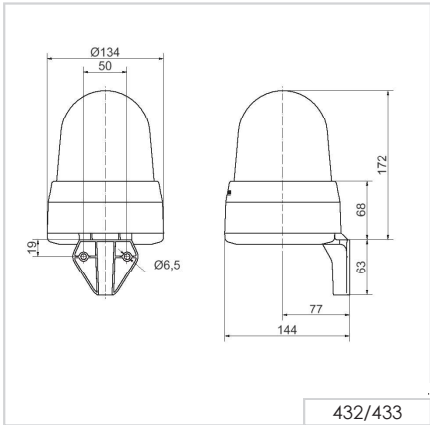
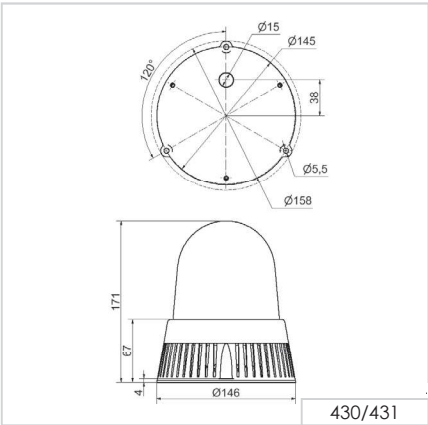


The adaptor enables mounting on a tube (431)

| ① TECHNICAL SPECIFICATIONS/ORDER SPECIFICATIONS: | | |
|--|---|-----------------------|
| | Base mounting (431) | Wall mounting (433) |
| Dimensions (Ø x Height): | 146 mm x 171 mm | 134 mm x 235 mm |
| Housing: | PCABS-Blend, black | PC/ABS-Blend, grey |
| Lens: | PC, transparent | |
| Connection: | Screw terminal 0.5-1.5 mm² | |
| Cable entry: | Cable diameter max. 13 mm | |
| Tone type and frequency: | 32 tones adjustable, see table on page 210 | |
| Installation position: | Sound outlet facing downwards | |
| Life duration: | Up to 50,000 hrs (LED), up to 5,000 hrs (Multi-tone Sounder) | |
| Fixing: | Base mounting (431), Wall mounting (433) Tube mounting (accessory, only for 431) | |
| Voltage: | 24 V AC/DC | 115-230 V AC* |
| Current consumption MTS: | 190 mA | 55 mA |
| Current consumption LED: | 350 mA 230 mA (red) | 100 mA 80 mA (red) |
| Base mounting | | |
| red | 431 100 75 | 431 100 60 |
| yellow | 431 300 75 | 431 300 60 |
| Wall mounting | | |
| red | 433 100 75 | 433 100 60 |
| yellow | 433 300 75 | 433 300 60 |
| *Current consumption at 115 V | | |

| ✂ ACCESSORIES: | |
|--|-------------------|
| Adaptor for tube mounting, plastic, for tube Ø 25 mm | 975 430 01 |

↔ TECHNICAL DIAGRAMS:



CE

UK
CA

cULus

525
g

IP65

+50°C
-30°C

108 dB

32



43 x Tone table for Multi-Tone Sounder

The Multi-Tone Sounder Combinations 43x offer a large choice of internationally recognised signal tones for the widest range of applications. The tone types and frequencies can be found in the table below:

| 🎵 TONE TYPES AND FREQUENCIES: | | | | | | |
|-------------------------------|-------------|----------------|--|-------------------------------------|---------------|--------------------|
| Tone 1 | Tone type | Frequency (Hz) | Description | Use | Tone 2 | Sound output (dbA) |
| 1 | continuous | 200 | | BS 5839-1:2002 | 440 Hz cont. | 97 |
| 2 | rising | 800 & 970 | 7 Hz | | 14 | 102 |
| 3 | rising | 800 & 970 | 1 Hz | | 14 | 103 |
| 4 | continuous | 2850 | | | 14 | 104 |
| 5 | rising | 2400 - 2850 | 7 Hz | | 4 | 109 |
| 6 | rising | 2400 - 2850 | 1 Hz | | 4 | 110 |
| 7 | rising | 500 - 1200 | 3 s, then 0.5 s OFF (then repeat) | | 14 | 106 |
| 8 | falling | 1200 - 500 | 1 Hz | DIN 33404-3 | 14 | 104 |
| 9 | alternating | 2400 & 2850 | 2 Hz | | 4 | 111 |
| 10 | pulse | 970 | 0.5 Hz (1 s On/1 s Off) | BS 5839 Part 1 1988 | 14 | 101 |
| 11 | alternating | 800 & 970 | 1 Hz | BS 5839 Part 1 1988 | 14 | 105 |
| 12 | pulse | 2850 | 0.5 Hz | | 4 | 104 |
| 13 | pulse | 970 | | 0,25 s On/1 s Off | 14 | 98 |
| 14 | continuous | 970 | | BS 5839-1:2002 PFEER - Toxic gas | 10 | 102 |
| 15 | alternating | 554 & 440 | | France NFS | 14 | 101 |
| 16 | pulse | 660 | 150 ms On/150 ms Off | Swedish | 16 | 96 |
| 17 | pulse | 660 | 1.8 s On/1.8 s Off | Swedish | 17 | 98 |
| 18 | pulse | 660 | 6.5 s On/13 s Off | Swedish | 18 | 98 |
| 19 | continuous | 660 | | Swedish | 19 | 98 |
| 20 | alternating | 554 & 440 | 0.5 Hz | | 20 | 102 |
| 21 | pulse | 660 | 1 Hz | Swedish | 21 | 97 |
| 22 | pulse | 2850 | 150 ms On/100 ms Off | GB | 14 | 104 |
| 23 | rising | 800 - 970 | 50 Hz (low) | BS 5839 Part 1 1988 | 14 | 102 |
| 24 | rising | 2400 - 2850 | 50 Hz (high) | | 4 | 109 |
| 25 | pulse | 970 | 3 x 500 ms ON/500 ms OFF / 1.5 s silence, then repeat (low) | ISO 8201 US Temporal | 26 | 101 |
| 26 | pulse | 2850 | 3 x 500 ms ON/500 ms OFF / 1.5 s silence, then repeat (high) | ISO 8201 US Temporal | 25 | 104 |
| 27 | continuous | 4000 | | | 27 | 92 |
| 28 | rising | 2000 - 2850 | 7 Hz | | 2000 Hz cont. | 111 |
| 29 | alternating | 988 & 645 | 2 Hz | | 988 Hz cont. | 102 |
| 30 | alternating | 510 & 610 | 2 Hz | | 510 Hz cont. | 102 |
| 31 | alternating | 800 & 970 | 2 Hz | 5839-1:2002 | 800 Hz cont. | 105 |
| 32 | alternating | 800 & 1200 | 1 Hz | | 800 Hz cont. | 105 |



434 LED Permanent Light / Horn Combination



Award winning design Winner of the iF product design award 2012



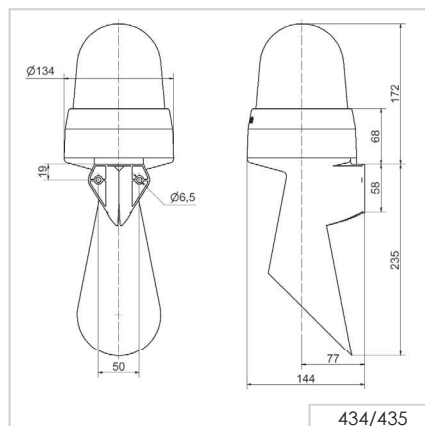
Quick and simple wall mounting without additional accessories thanks to integrated mounting bracket

① TECHNICAL SPECIFICATIONS/ORDER SPECIFICATIONS:

| | | |
|--------------------------|---|-------------------|
| Dimensions (L x H x W): | 134 mm x 407 mm x 144 mm | |
| Housing: | PC/ABS-Blend, grey | |
| Lens: | PC, transparent | |
| Connection: | Screw terminal 0.5-1.5 mm ² | |
| Cable entry: | Cable diameter max. 13 mm | |
| Tone frequency: | c. 110 Hz | |
| Life duration: | Up to 50,000 hrs (LED), up to 5,000 hrs (Horn) | |
| Fixing: | Wall mounting, integrated mounting bracket | |
| Installation position: | Sound outlet facing downwards | |
| Voltage: | 24 V AC/DC | 115-230 V AC* |
| Current consumption MTS: | 55 mA | 30 mA |
| Current consumption LED: | 350 mA | 100 mA |
| | 230 mA (red) | 80 mA (red) |
| red | 434 100 75 | 434 100 60 |
| yellow | 434 300 75 | 434 300 60 |

*Current consumption at 115 V

↔ TECHNICAL DIAGRAMS:



435 LED Permanent / Flashing / EVS / Horn Combination



Multi-functional LED beacon:
3 light effects can be triggered
externally



The "EVS" light effect ensures a
maximum attention-grabbing
effect

| ① TECHNICAL SPECIFICATIONS/ORDER SPECIFICATIONS: | | |
|--|---|-------------------|
| Dimensions (L x H x W): | 134 mm x 407 mm x 144 mm | |
| Housing: | PC/ABS-Blend, grey | |
| Lens: | PC, transparent | |
| Connection: | Screw terminal 0.5-1.5 mm ² | |
| Cable entry: | Cable diameter max. 13 mm | |
| Tone frequency: | c. 110 Hz | |
| Life duration: | Up to 50,000 hrs (LED), up to 5,000 hrs (Horn) | |
| Fixing: | Wall mounting, integrated mounting bracket | |
| Installation position: | Sound outlet facing downwards | |
| Voltage: | 24 V AC/DC | 115-230 V AC* |
| Current consumption MTS: | 55 mA | 30 mA |
| Current consumption LED: | 350 mA | 100 mA |
| | 220 mA (red) | 80 mA (red) |
| red | 435 100 75 | 435 100 60 |
| yellow | 435 300 75 | 435 300 60 |
| *Current consumption at 115 V | | |

← TECHNICAL DIAGRAMS:

