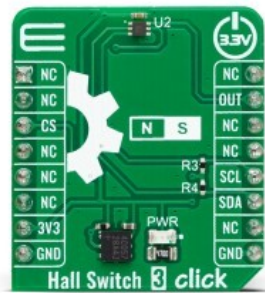


Hall Switch 3 Click



PID: MIKROE-6017

Hall Switch 3 Click is a compact add-on board representing a magnetic field-activated switch. This board features the [NMH1000](#), a Hall-effect magnetic switch from [NXP Semiconductor](#). It is a low-voltage, low-current, and low-output data rate device with a very small size. The switch is most sensitive to a vertical field passing through the top-bottom surfaces, orthogonal to the plane of the Hall Switch 3 Click board™. This Click board™ makes the perfect solution for the development of electronic system wake-up, home automation systems (door or window open/close), contactless switches, lids or tray position detecting switches, proximity detection applications, and more.

Hall Switch 3 Click is fully compatible with the mikroBUS™ socket and can be used on any host system supporting the [mikroBUS™](#) standard. It comes with the [mikroSDK](#) open-source libraries, offering unparalleled flexibility for evaluation and customization. What sets this [Click board™](#) apart is the groundbreaking [ClickID](#) feature, enabling your host system to seamlessly and automatically detect and identify this add-on board.

Mikroe produces entire development toolchains for all major microcontroller architectures.

Committed to excellency, we are dedicated to helping engineers bring the project development up to speed and achieve outstanding results.



ISO 27001: 2013 certification of informational security management system.
ISO 14001: 2015 certification of environmental management system.
OHSAS 18001: 2008 certification of occupational health and safety management system.



ISO 9001: 2015 certification of quality management system (QMS).

Specifications

Type	Magnetic
Applications	Can be used for the development of electronic system wake-up, home automation systems (door or window open/close), contactless switches, lids or tray position detecting switches, proximity detection applications, and more
On-board modules	NMH1000 - a Hall-effect magnetic switch from NXP Semiconductor
Key Features	Selectable threshold, selectable sample rate, output indicates of absence of a magnetic field as compared to an internally set threshold, consists of a state machine, analog-to-voltage conversion, generation of a bi-state output, arranged in linear succession, and more
Interface	I2C
ClickID	Yes
Compatibility	mikroBUS™
Click board size	S (28.6 x 25.4 mm)
Input Voltage	3.3V

Resources

[mikroBUS™](#)

[mikroSDK](#)

[Click board™ Catalog](#)

[Click Boards™](#)

[ClickID](#)

Downloads

[Hall Switch 3 click example on Libstock](#)

[Hall Switch 3 click 2D and 3D files](#)

[Hall Switch 3 click schematic](#)

[NMH1000 datasheet](#)

Mikroe produces entire development toolchains for all major microcontroller architectures.

Committed to excellency, we are dedicated to helping engineers bring the project development up to speed and achieve outstanding results.



ISO 27001: 2013 certification of informational security management system.
ISO 14001: 2015 certification of environmental management system.
OHSAS 18001: 2008 certification of occupational health and safety management system.



ISO 9001: 2015 certification of quality management system (QMS).