

The logo for goodram, featuring the word "goodram" in white lowercase letters on a dark blue square background.

industrial

GOODRAM Industrial SD Memory Card pSLC type DATASHEET

Version: 1.3

Date: December 2023

SD Card for Industrial Applications

Wilk Elektronik S.A.

Mikołowska 42

43-173 Łaziska Górne, Poland

Tel.: +48 32 736 90 00, Fax.: +48 32 736 90

E-mail: industrial@goodram.com

All rights are strictly reserved. Any portion of this paper shall not be reproduced, copied or translated to any other forms without permission from Wilk Elektronik S.A.

This document is subject to change without any notice.

Please contact your Wilk Elektronik S.A. sales representative for details as to environmental matters such as the RoHS compatibility of Product. Please use Product in compliance with all applicable laws and regulations that regulate the inclusion or use of controlled substances, including without limitation, the EU RoHS Directive. Wilk Elektronik S.A. assumes no liability for damages or losses occurring as a result of noncompliance with applicable laws and regulations.

REVISION HISTORY

VERSION	CHANGES	DATE
1.0	Initial release	28.12.2016
1.1	Logo amendment	17.01.2018
1.2	Logo amendment	21.04.2020
1.3	Logo amendment	15.12.2023

TABLE OF CONTENTS

REVISION HISTORY.....	3
PRODUCT OVERVIEW	5
PRODUCT DETAILS	6
GENERAL DESCRIPTION	6
PIN ASSIGNMENT	6
FLASH MANAGEMENT.....	7
PERFORMANCE	10
ELECTRICAL SPECIFICATIONS.....	11
PHYSICAL DIMENSION	12
PRODUCT ORDERING INFORMATION.....	12
STANDARDS & REFERENCES.....	13
SAFETY PRECAUTIONS	13
NOTES ON USAGE	14

PRODUCT OVERVIEW

- | | |
|--------------------------------------------------------------------------------------------------------------------------------------------------------------------------------------------------------------------------------------------------------------------------------------------------------------------------------------------------------------------------------------------------------------------------------------------------------------------------------------------------------------------------------------------------------------------------------------------------------------------------------------------------------------------------------------------------------------------|----------------------------------------------------------------------------------------------------------------------------------------------------------------------------------------------------------------------------------------------------------------------------------------------------------------------------------------------------------------------------------------------------------------------------------------------------------------------------------------------------------------------------------------------------------------------------------------------------------------------------------------------------------------------------------------------------------------------------------------------------------------------------------------|
| <ul style="list-style-type: none"> Capacity: <ul style="list-style-type: none"> o pSLC: 2GB – 64GB Flash Type <ul style="list-style-type: none"> o MLC Note1 Bus Speed Mode <ul style="list-style-type: none"> o 2GB -64GB: UHS-I Power Consumption Note2 <ul style="list-style-type: none"> o Power Up Current < 250uA o Standby Current < 1000uA o Read Current < 400mA o Write Current < 400mA Performance <ul style="list-style-type: none"> o Read: Up to 95MB/s o Write: Up to 90MB/s Support CPRM | <ul style="list-style-type: none"> MTBF <ul style="list-style-type: none"> o More than 3 000 000 hours Advanced Flash Management <ul style="list-style-type: none"> o Static and Dynamic Wear Leveling o Bad Block Management o SMART Function Note3 o Auto-Read Refresh o Embedded Mode Note3 Operating Voltage range <ul style="list-style-type: none"> o 2.7 – 3.6 V Temperature Range Note4 <ul style="list-style-type: none"> o Operation <ul style="list-style-type: none"> o Gold: -25°C — +85°C o Diamond: -40°C — +85°C o Storage: -40°C — +85°C RoHS compliant |
|--------------------------------------------------------------------------------------------------------------------------------------------------------------------------------------------------------------------------------------------------------------------------------------------------------------------------------------------------------------------------------------------------------------------------------------------------------------------------------------------------------------------------------------------------------------------------------------------------------------------------------------------------------------------------------------------------------------------|----------------------------------------------------------------------------------------------------------------------------------------------------------------------------------------------------------------------------------------------------------------------------------------------------------------------------------------------------------------------------------------------------------------------------------------------------------------------------------------------------------------------------------------------------------------------------------------------------------------------------------------------------------------------------------------------------------------------------------------------------------------------------------------|

Notes:

1. Pseudo SLC can be considered as an extended version of MLC.
2. Please see "Power Consumption" for details.
3. This function is enabled by customer requirement.
4. According to IEC-60068-2-1/2/14/38 standard.

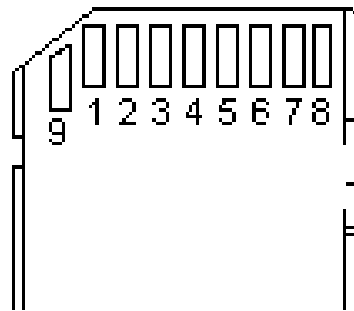
PRODUCT DETAILS

GENERAL DESCRIPTION

The Secure Digital (SD) card version 3.0 is fully compliant to the specification released by SD Card Association. The Command List supports [Part 1 Physical Layer Specification Ver3.01 Final] definitions. Card Capacity of Non-secure Area, Secure Area Supports [Part 3 Security Specification Ver3.0 Final] Specifications.

The SD 3.0 card is based on 9-pin interface, designed to operate at a maximum operating frequency of 100MHz. It can alternate communication protocol between the SD mode and SPI mode. It performs data error detection and correction with very low power consumption.

PIN ASSIGNMENT



PIN	SD MODE			SPI MODE		
	NAME	TYPE	DESCRIPTION	NAME	TYPE	DESCRIPTION
1	CD/DAT3	I/O/P	Card Detect/ Data Line [bit3]	CS	I	Chip Select (neg true)
2	CMD	PP	Command/Response	DI	I	Data In
3	VSS	S	Supply voltage ground	VSS	S	Supply voltage ground
4	VDD	S	Supply Voltage	VDD	S	Supply Voltage
5	CLK	I	Clock	SCLK	I	Clock
6	VSS	S	Supply voltage ground	VSS	S	Supply voltage ground
7	DAT0	I/O/P	Data Line [bit0]	DO	O/PP	Data Out
8	DAT1	I/O/P	Data Line [bit1]	RSV		
9	DAT2	I/O/P	Data Line [bit2]	RSV		

FLASH MANAGEMENT

GOODRAM SD card utilizes all the state of art technologies to ensure full reliability until the specified NAND Flash program/erase cycles parameter is reached. These technologies include but are not limited to:

Error Correction Code (ECC)

Flash memory cells will deteriorate with use, which may generate random bit errors in the stored data. To ensure the highest reliability, GOODRAM SD card applies the BCH ECC Algorithm, which can detect and correct errors that occur during read process, to ensure data is read correctly, as well as protected from corruption.

Wear Leveling

Storage devices based on NAND flash memory, can only undergo a limited number of program/erase cycles, and due to various usage scenarios, data may not be distributed evenly between NAND flash chips. If a certain area gets updated more frequently than others, the lifetime of the device will be reduced significantly. Wear Leveling algorithm used in GOODRAM SD cards is used to extend the lifespan of NAND Flash by evenly distributing write and erase cycles across the whole storage area. Moreover, by utilizing both dynamic and static Wear Leveling algorithms, the life expectancy of GOODRAM SD cards can meet the listed specification.

Bad Block Management

Bad blocks are blocks that include one or more invalid bits, and their reliability is not guaranteed. Blocks that are identified and marked as bad by the manufacturer are referred to as "Initial Bad Blocks". Bad blocks that are developed during the lifespan of the flash are named "Later Bad Blocks". GOODRAM SD card uses an efficient bad block management algorithm to detect all types of bad blocks, which further prevents data being stored into them and improves the data reliability.

SMART Function

SMART, an acronym for Self-Monitoring, Analysis and Reporting Technology, is a special function that allows a memory device automatically monitor its health.

Auto-Read Refresh

Auto-Read Refresh is especially applied on devices that read data mostly but rarely write data. When blocks are continuously read, then the device cannot activate wear leveling since it can only be applied while writing data. Thus, errors will accumulate and become uncorrectable. Accordingly, to avoid errors exceed the amount ECC can correct and blocks turn bad, firmware will automatically refresh the bit errors when the error number in one block approaches the threshold, ex. 24 bits.

Embedded Mode

Embedded mode is a function specially designed for operating systems that not utilize FAT. Often under non Windows OS, for example Linux or customized host, wear leveling mechanism will be affected or even disabled in some cases. With embedded mode activated, wear leveling mechanism can operate normally to keep the usage of blocks even throughout the card's life cycle.

Pseudo SLC

Pseudo SLC can be considered as an extended version of MLC. While MLC contains fast and slow pages, pSLC only applies fast pages for programming. The concept of pSLC is demonstrated in the two tables below. Because only fast pages are programmed, pSLC provide better performance and endurance than MLC.

MLC Flash		Pseudo SLC Flash	
1st Bit (Fast page)	2nd Bit (Slow page)	1st Bit (Fast page)	2nd Bit (Slow page)
1	1	1	1
1	0	1	0
0	1	0	1
0	0	0	0

COMPARING SD3.0, SDHC AND SDXC

	SD3.0 Standard (Backward compatible to 2.0 host)	SD3.0 SDHC/SDXC (Backward compatible to 2.0 host)
Addressing Mode	Byte (1 byte unit)	Block (512 byte unit)
HCS/CCS bits of ACMD41	Support	Support
CMD8 (SEND_IF_COND)	Support	Support
CMD16 (SET_BLOCKLEN)	Support	Support (Only CMD42)
Partial Read	Support	Not Support
Lock/Unlock Function	Mandatory	Mandatory
Write Protect Groups	Optional	Not Support
Supply Voltage 2.0v – 2.7v (for initialization)	Not Support	Not Support
Total Bus Capacitance for each signal line	40pF	40pF
CSD Version (CSD_STRUCTURE Value)	1.0 (0x0)	2.0 (0x1)
Speed Class	Optional	Mandatory (Class 2/4/6/10)

PERFORMANCE

Process	Capacity	Mode	Flash Structure	Sequential	
				Read (MB/s)	Write (MB/s)
A19nm	2GB	UHS-I	4GB x 1, SIP	20	20
	4GB	UHS-I	4GB x 1, SIP	20	20
	8GB	UHS-I	8GB x 1, SIP	90	80
	16GB	UHS-I	8GB x 2, SIP 16GB x 1, SIP	95	90
	32GB	UHS-I	8GB x 4, SIP 16GB x 2, SIP	95	90
	64GB	UHS-I	8GB x 8, SIP 16GB x 4, SIP	95	90
15nm	2GB	UHS-I	4GB x 1, SIP	20	20
	4GB	UHS-I	4GB x 1, SIP	20	20
	8GB	UHS-I	8GB x 1, SIP	90	80
	16GB	UHS-I	8GB x 2, SIP 16GB x 1, SIP	95 95	90 80
	32GB	UHS-I	8GB x 4, SIP 16GB x 2, SIP	95 95	95 90
	64GB	UHS-I	16GB x 4, SIP	95	90

Note:

1. Performance may vary from flash configuration and platform.
2. The table above is for your reference only. The criteria for mass production and for accepting goods shall be discussed based on different flash configuration.

ELECTRICAL SPECIFICATIONS

Process	Capacity	Flash Structure	Read (mA)	Write (mA)	Idle (uA)
A19nm	2GB	4GB x 1, SIP	400	400	1000
	4GB	4GB x 1, SIP	400	400	1000
	8GB	8GB x 1, SIP	400	400	1000
	16GB	8GB x 2, SIP 16GB x 1, SIP	400	400	1000
	32GB	8GB x 4, SIP 16GB x 2, SIP	400	400	1000
	64GB	8GB x 8, SIP 16GB x 4, SIP	400	400	1000
15nm	2GB	4GB x 1, SIP	400	400	1000
	4GB	4GB x 1, SIP	400	400	1000
	8GB	8GB x 1, SIP	400	400	1000
	16GB	8GB x 2, SIP 16GB x 1, SIP	400	400	1000
	32GB	8GB x 4, SIP 16GB x 2, SIP	400	400	1000
	64GB	16GB x 4, SIP	400	400	1000

Note:

1.Data transfer mode is single channel.

2.Power Consumption may differ according to flash configuration, SDR configuration or platform.

PARAMETER	RATING
Operating voltage	2.7 – 3.6V +/- 5%

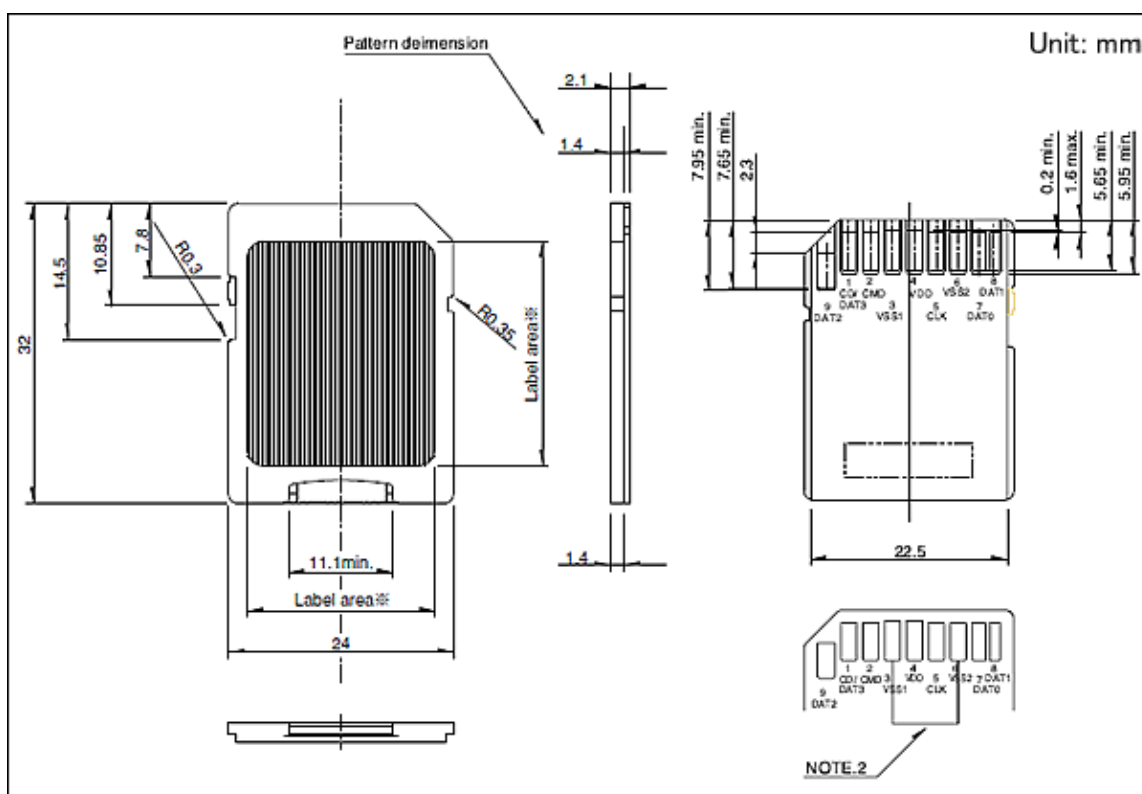
Temperature specification

SYMBOL	PARAMETER	MIN.	MAX.	UNIT
T _a	Operating Temperature Gold	-25	+85	°C
T _a	Operating Temperature Diamond	-40	+85	°C
T _{st}	Storage Temperature	-40	+85	°C

industrial

PHYSICAL DIMENSION

Dimension: 32mm(L) x 24mm(W) x 2.1mm(H)



PRODUCT ORDERING INFORMATION

PN	Type	Capacity	Technology	Temp range
SDC2GGPGRB	SD	2 GB	pSLC	-25°C — 85°C
SDC4GGPGRB	SD	4 GB	pSLC	-25°C — 85°C
SDC8GGPGRB	SD	8 GB	pSLC	-25°C — 85°C
SDC16GGPGRB	SD	16 GB	pSLC	-25°C — 85°C
SDC32GGPGRB	SD	32 GB	pSLC	-25°C — 85°C
SDC64GGPGRB	SD	64 GB	pSLC	-25°C — 85°C
SDC2GDPGRB	SD	2 GB	pSLC	-40°C — 85°C
SDC4GDPGRB	SD	4 GB	pSLC	-40°C — 85°C
SDC8GDPGRB	SD	8 GB	pSLC	-40°C — 85°C
SDC16GDPGRB	SD	16 GB	pSLC	-40°C — 85°C
SDC32GDPGRB	SD	32 GB	pSLC	-40°C — 85°C
SDC64GDPGRB	SD	64 GB	pSLC	-40°C — 85°C

STANDARDS & REFERENCES

The following table is to list out the standards that have been adopted for designing the product.

STANDARD USED	ACRONYM/SOURCE
RoHS	Restriction of Hazardous Substances Directive
SD specification	http://www.sdcard.org
CE	Consumer electronics certification; please contact us for further information.

SAFETY PRECAUTIONS

Do not bend, crush, drop, or place heavy objects on top of the Product. Do not use tweezers, pliers or similar items that could damage the Product. Take particular care when inserting or removing the Product. Stop using the Product when the Product does not work properly. Failure to follow these instructions could result in fire, damage to the Product and/or other property, and/or personal injury including burns and electric shock.

Keep out of reach of small children. Accidental swallowing may cause suffocation or injury. Contact a doctor immediately if you suspect a child has swallowed the Product.

Do not directly touch the interface pins, put them in contact with metal, strike them with hard objects or cause them to short. Do not expose to static electricity.

Do not disassemble or modify the Product. This may cause electric shock, damage to the Product or fire.

NOTES ON USAGE

The Product contains nonvolatile semiconductor memory. Do not use the Product in accordance with a method of usage other than that written in the manual. This may cause the destruction or loss of data.

To protect against accidental data loss, you should back up your data frequently on more than one type of storage media. Wilk Elektronik S.A. assumes no liability for destruction or loss of data recorded on the Card for any reason.

When used over a long period of time or repeatedly, the reading, writing and deleting capabilities of the Product will eventually fail, and the performance speed of the Product may decrease below the original speed specific to the Product's applicable class.

If the Product is to be transferred or destroyed, note that the data it contained may still be recoverable unless it is permanently deleted by third-party deletion software or similar means beforehand.

Product is intended for use in general electronics applications and selected industrial applications and any other specific applications as expressly stated in this document. Product is neither intended nor warranted for use in equipment or systems where failure may cause loss of human life, bodily injury, serious property damage or serious public impact ("Unintended Use"). Unintended Use includes, without limitation, equipment used in nuclear facilities, equipment used in the aerospace industry, medical equipment or equipment used to control combustions or explosions. Do not use Product for Unintended Use unless specifically permitted in this document.

No parts of this document may be reproduced, stored in a retrieval system, or transmitted, in any form or by any means, mechanical, electric, photocopying, recording or otherwise, without permission of Wilk Elektronik S.A.

Wilk Elektronik S.A does not make any warranty, express or implied, with respect to this document, including as to licensing, Non-infringement, merchantability or fitness for a particular purpose.