

# High-current probe HSS-120 303 300 A 2202 M

Item HSS-120-0080



**ingun**<sup>®</sup>  
Partner for Future Technology

- Trusted high-current probes, optimally sized for current load capacity ratio

## General data

|                                |                                  |
|--------------------------------|----------------------------------|
| Product group                  | High-current test probe          |
| Sub-product group              | Standard HSS (screw-in)          |
| Series                         | HSS-120 M screw-in               |
| Grid                           | 4 mm [157 mil]                   |
| Contacting from                | Pin, Post                        |
| Magnetic                       | Yes                              |
| Installation type              | Screw-in                         |
| Quick-exchange system          | Yes                              |
| Adjustable installation height | No                               |
| Non-rotating                   | No                               |
| Screw-in torque                | 10 - 20 cNm [.885 - 1.77 lbf·in] |
| Compatible receptacle(s)       | KS-113 M                         |
| Min. temperature               | - 100 °C [- 212 °F]              |
| Max. temperature               | + 200 °C [+ 392 °F]              |
| RoHS-compliant                 | RoHS-3;6c                        |

## Electrical data

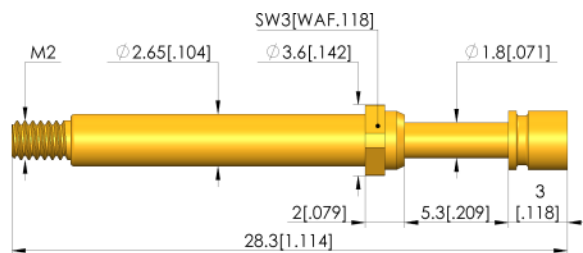
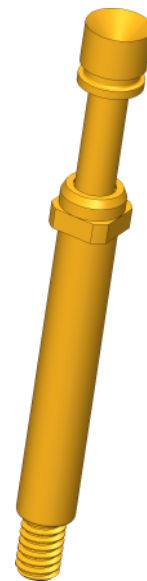
|                                       |          |
|---------------------------------------|----------|
| Current load capacity / rated current | 30 A     |
| Typical resistance (Ri)               | <10 mOhm |

## Mechanical data

|                                |                   |
|--------------------------------|-------------------|
| Total length                   | 28.3 mm [1.11 in] |
| Barrel diameter                | 2.65 mm [.104 in] |
| Maximum stroke                 | 5.3 mm [.208 in]  |
| Spring pre-load                | 0.58 N [2.08 ozf] |
| Collar height                  | 02                |
| Spring force at working stroke | 2.25 N [8.09 ozf] |
| Recommended working stroke     | 4 mm [.157 in]    |

## Tip style data

|                    |                 |
|--------------------|-----------------|
| Tip style          | 03 inverse cone |
| Tip diameter       | 3 mm [.118 in]  |
| Tip style surface  | A gold          |
| Tip style material | 3 CuBe          |



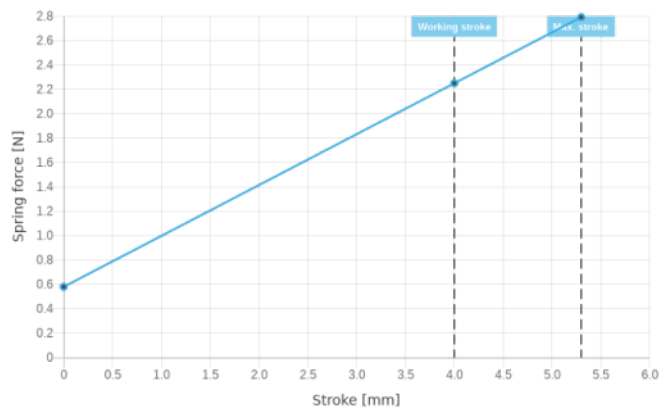
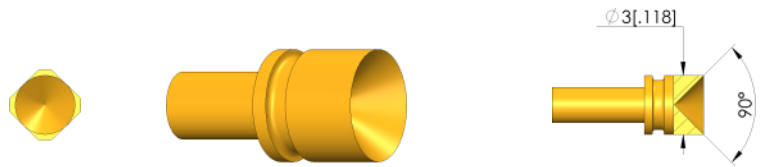
# High-current probe

## HSS-120 303 300 A 2202 M

Item HSS-120-0080



**ingun**<sup>®</sup>  
Partner for Future Technology



### INGUN Prüfmittelbau GmbH

Max-Stromeyer-Straße 162  
78467, Constance, Germany  
Phone +49 7531 8105-0  
Customer hotline +49 7531 8105-888  
Fax +49 7531 8105-65  
info@ingun.com



Prices and delivery times on request.  
Technical changes reserved. 11/23 EN

Learn more about  
Screw-in test probe



ingun.com

SCREW-IN TEST PROBE