

# Diagonal cutting nippers

461/1VDEDP



## Profiles

---



## Standards

---

DIN EN IEC 60900 (VDE 0682-201):2019-04; EN IEC 60900:2018

## Product features

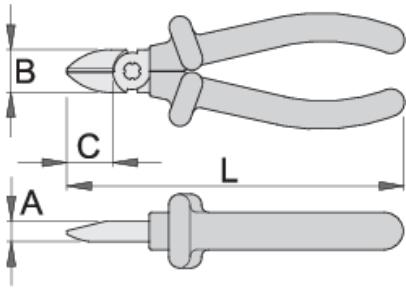
- material: premium plus carbon steel
- drop forged, entirely hardened and tempered
- cutting edges induction hardened
- head polished
- surface finish: chrome plated to standard ISO 1456:2009
- made according to standard ISO 5749 and EN IEC 60900

## Advantages:

- handles are insulated with double layered - double coloured insulation for additional safety

## Important!

- if second layer is visible, replace your insulated tool with a new one.



Barcode	L	B	A	C	Weight
619193	140	19	9.5	18	174
619194	160	22.5	10	22	224

cutting capacity (10N=1kg)

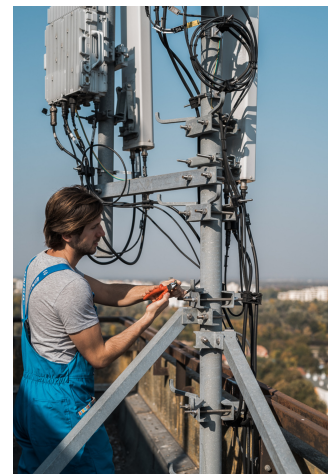
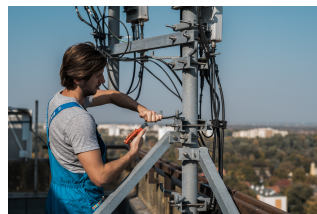
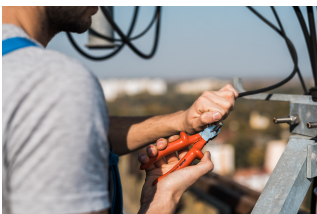
Barcode	L	max 1600 N/mm <sup>2</sup> Ø↑	max 650 N/mm <sup>2</sup> Ø↑
619193	140	1,6	2,0
619194	160	1,6	2,5

\* Images of products are symbolic. All dimensions are in mm, and weight in grams. All listed dimensions may vary in tolerance.

Usage (pictures)



Photo (pictures)



## Frequently asked questions

### **Are certified insulated tools made through a different procedure than non-certified insulated tools?**

The tools are made according to the same procedure.

### **Are insulated (VDE) tools considered as personal protective equipment (PPE)?**

According to EU regulations, VDE tools are not considered as PPE.

### **Is it possible to work with insulated pliers under electrical voltage?**

Yes, but only by professionals who follow safety requirements and use additional personal protective equipment.

### **Are the VDE tools only being sampled in series production?**

The high voltage test (at 10kV) is performed fully on each tool. Other tests are performed in accordance with the EN60900 standard.