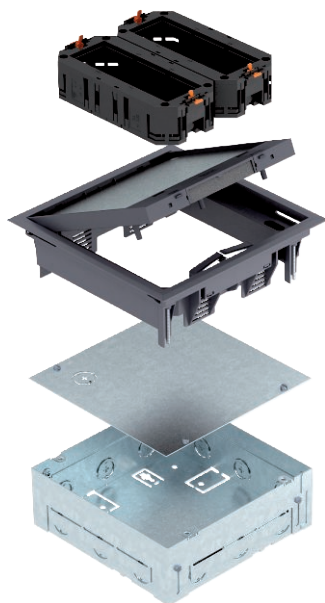


Technical data sheet

Complete solution, GES4 service outlet

Item no. 7427460



Square installation unit with cord outlet for use in dry-care cavity floors and screed floors for indoor use, consisting of an installation housing and GES4-2 service outlet (colour Iron grey; RAL 7011) with two universal supports. Installation housing with pre-marked insertion openings for pipelines (M25), adjustable to top edge of screed. In the as-delivered state, the installation housing is closed with a blanking lid. After screed work, the service outlet can be inserted in the created mounting opening. 3, 5, 8 or 10 mm floor covering recess in the hinged cover of the service outlet. The minimum installation depth is 72 mm including floor covering, the height adjustment range +30 mm.

Up to 6 individual Modul 45® devices can be installed.

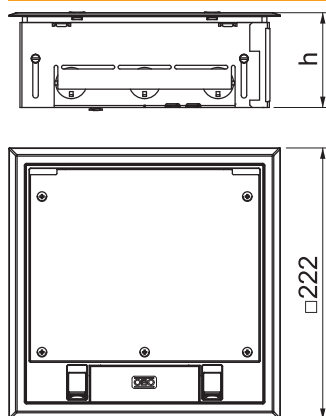


PA Polyamide

Master data

Item no.	7427460
Type	UD GES4-2 7011
Description 1	Service outlet
Description 2	with installation housing
Dimension	222x222x140
Colour	Iron grey
RAL number	7011
Material	Polyamide
Material symbol	PA
Smallest sales unit (VG)	1 Piece
Weight	290,00 kg/100 pc.

Technical data



Length	205,00 mm
Width	205,00 mm
Cable outlet version	Swivellable cord outlet
Installation depth	72,00 mm
Screed height	72-102 mm
Opening mechanism	Locking slider
Installation system type	UT3