

Spark Plug Rethreader Set

11305SQ

- Spark plug rethreader set is used for rethreading damaged spark plug threads in aluminum cylinder heads



KT NO.	Size mm	Type inch		
11305SQ	14	3/8, 7/16, 1/2, 3/4	13	12 / 72

Double Size "L" Handle

1586

- Material : Chrome vanadium alloy steel
- For oil plug



KT NO.	Overall length inch	mm	Size inch	mm		
1586-09	9	230	5/16 x 3/8	8 x 10	320	6 / 48

1596

- Material : Chrome vanadium alloy steel
- For oil plug



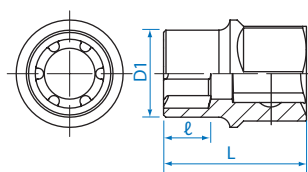
KT NO.	Overall length inch	mm	Size inch	mm		
1596-09	9	230	3/8	10	290	6 / 48

Ribe Socket M10S

9AW4911

1/2"

- 6 points
- Use for replacing and removing idler pulley center screw on TOYOTA ALTIS
- 1/2" DR. socket ribe M10S for TOYOTA



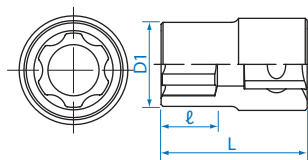
KT NO.	Size	D1 mm	l mm	L mm		
9AW4911	M10S	19	10	33.8	16	10 / 200

Ribe Socket M12S

9AW4901

1/2"

- 6 points
- Use for replacing and removing engine head screw and flywheel center screw on NISSAN models
- 1/2" DR. socket ribe M12S for NISSAN



KT NO.	Size	D1 mm	l mm	L mm		
9AW4901	M12S	22	14	38	15	10 / 200

Bearing Race and Seal Driver Set

9BA11

- Quick and easy to insert bearing race
- Collars fit most standard wheel bearing sizes
- Helps reduce damage to both race and axle housing
- 9 collar sizes:

- 1.574"/40mm
- 1.732"/44mm
- 1.968"/50mm
- 2.322"/59mm
- 2.480"/63mm
- 2.559"/65mm
- 2.834"/72mm
- 2.992"/76mm
- 3.189"/81mm

1.8 1 / 10



10
PC.