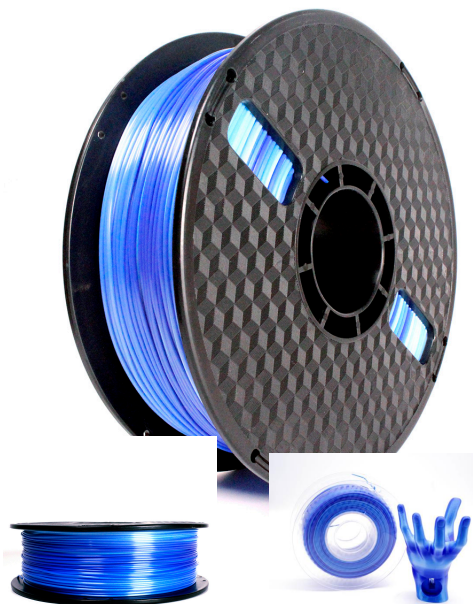


3DP-PLA-SK-01-ICE

Filament, PLA Silk Ice, Ice blue + dark blue, 1.75 mm, 1 kg

VERSATILE & EASY TO USE

- PLA (polylactide) is a biodegradable thermoplastic polyester, which is easy to print for variety 3D printers.
- It has no odor, a lower melting point and good flowability, no need to post-treatment
- The material is composed of PLA and ester
- The effect of "silk" on the surface



Features

- High precision roundness enables higher printing quality
- No bubbles, vivid colors
- Can be applied to a variety of 3D printers

Packaging

Q'ty in crtn, pcs	8
Crtn volume, CUM	0.035
Crtn weight, kgs	12.04
Individual package size LxWxH:	208x208x83 mm
Carton size LxWxH:	350x430x230 mm
Country of origin	CN
Barcode	8716309123990
Customs code	3916909000

Specifications

Material: PLA, 1.75 mm diameter
Weight: 1 kg/spool (2.2 lbs)
Length: approx. 340 m
Density at 21.5 °C: 1.21 g/cm³
Melt Flow Index at 10min, 2.16kg: 6...8
Melt Point: 190 220 °C
Heat-Deflection-Temperature at 0.455 MPa: 50 °C
Yield Strength at 5mm/min: > 30 MPa
Impact Strength: 5 KJ/m²
Tensile Break: 20 %
Diameter: 1.75 ± 0.05 mm

System requirements

A 3D printer with 1.75 mm extruder of temperature around 200 °, suitable for PLA filament

Certificates

