

PRODUCT DATA SHEET

3870H45.68

Plug-in tabs screwable – 3870 H/45 Ms sn



Product Overview

SKU	3870h45.68
Part description	Plug-in tabs screwable
Part designation	3870 H/45 Ms sn

Material

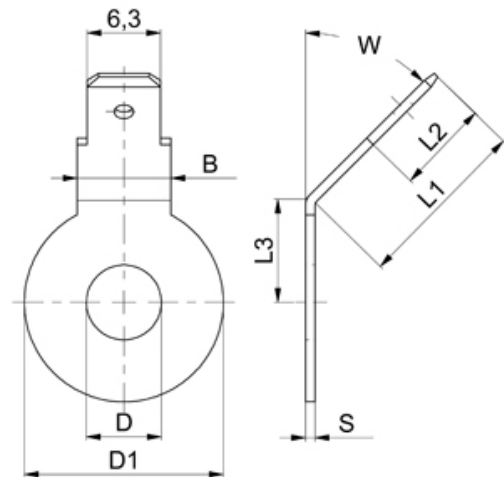
Component	Brass
Surface	pure-tin-plated

Technical Details

Net weight kg/1000	1.624
--------------------	-------

Dimensions

D [mm]	10.5
D1 [mm]	17.00
B [mm]	8.00
L1 [mm]	15.00
L2 [mm]	8.00
L3 [mm]	8.50
W [°]	45.00
S [mm]	0.80



© 2022 | Vogt AG Verbindungstechnik

The general conditions of sale of Vogt AG apply to this product. See www.vogt.ch/downloads.

This data sheet is regularly revised but is not subject to any change service.

This article is a freely available article according to the above specification. The availability of certificates according to EN 10204, others acceptance test certificates or material compliance and customer-specific part submission warrant, are to be requested by the customer and, if available, can be obtained for a fee.

You can find more information on the free available product conformities at www.vogt.ch/downloads.