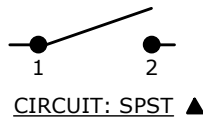
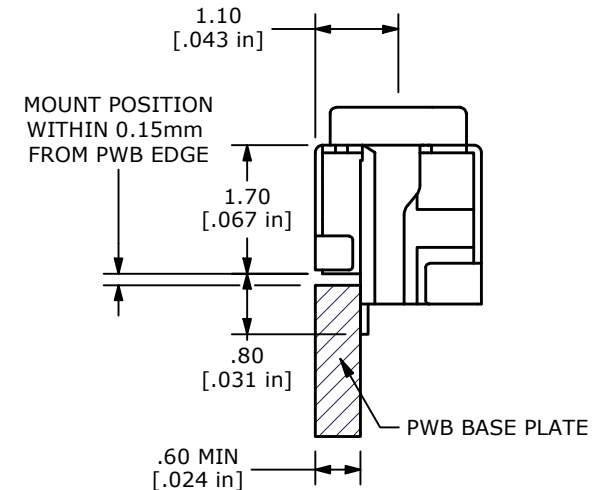
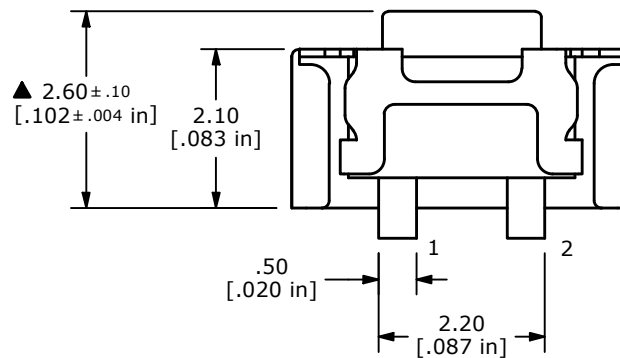
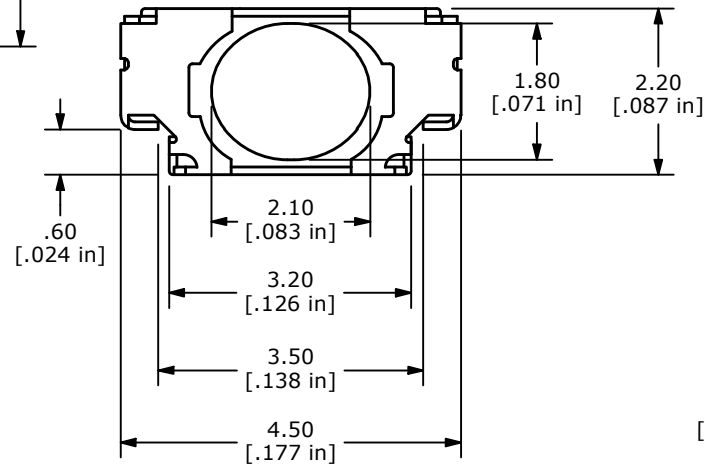
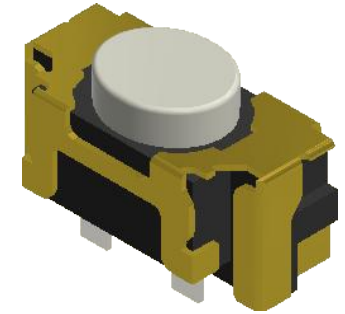
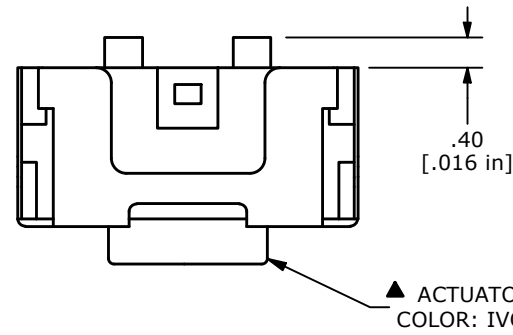


RECOMMENDED P.C.B. LAYOUT



## NOTES:

1. ALL DIMENSIONS IN MM
2. GENERAL TOLERANCE:  $X.X = \pm 0.4$   
 $X.XX = \pm 0.25$
3. TERM. NUMBERS FOR REF. ONLY.
4. RATING: 50mA @12VDC
- ▲ 5. OPERATING FORCE:  $160 \pm 50 \text{ gf}$
6. TRAVEL:  $0.15 \pm 0.1 \text{ mm}$
7. BOUNCE: 10msec. MAX.
8. CONTACT RESISTANCE: 500 mΩ MAX.
9. INSULATION RESISTANCE: 100MΩ MIN @100VDC
10. DIELECTRIC STRENGTH: 250VAC for 1 minute
11. ELECTRICAL LIFE: 600,000 CYCLES
- ▲ 12. CONTACT MATERIAL: SILVER
13. PACKAGING: TAPE AND REEL
14. ▲ DENOTES CRITICAL PARAMETER
15. OPERATING TEMP: -30°C TO 85°C



E-SWITCH®

OBJECT ID  
100100686

A	24822	NEW RELEASE	3/26/21	JM
REV	PCR NO	DESCRIPTION	DATE	BY

THE INFORMATION CONTAINED IN THIS DOCUMENT IS PROPRIETARY TO  
E-SWITCH AND IS NOT TO BE COPIED OR TRANSFERRED

TITLE TL4115AF160Q

SCALE  
10:1DATE  
3/26/2021DR  
JMDWG  
P180002REV  
A