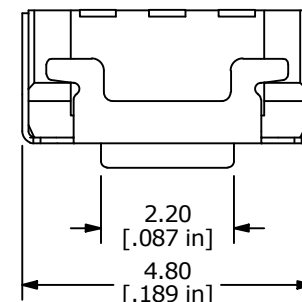
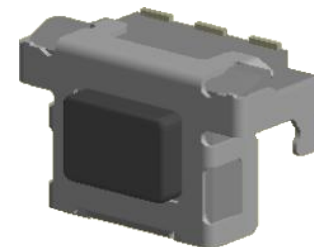
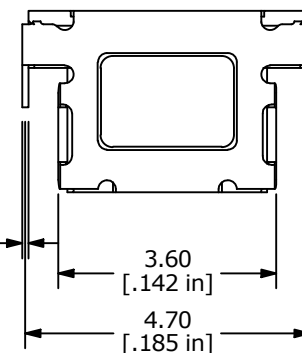
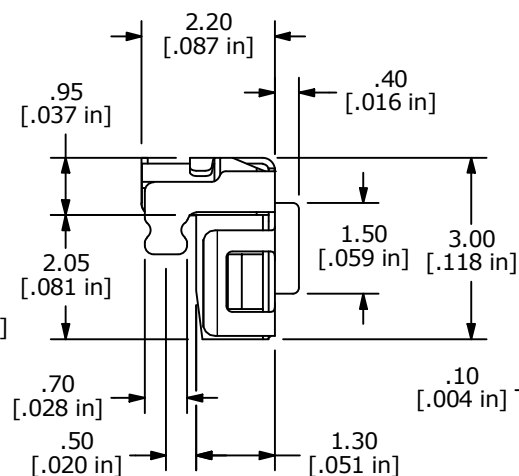
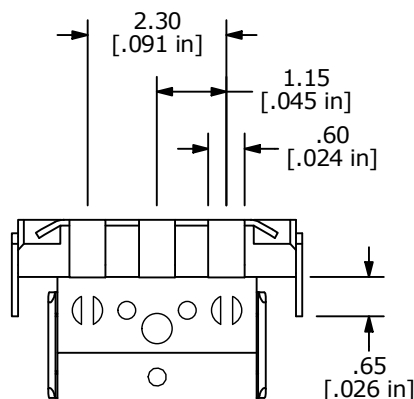


SCHEMATIC



NOTES

1. ALL DIMENSIONS IN MM [INCH]
2. GENERAL TOLERANCE: X.X = ± 0.4
X.XX = ± 0.25
3. TERMINAL NUMBERS FOR REF. ONLY.
- ▲ 4. OPERATING FORCE: 160 ± 50 gf
5. OPERATING LIFE: 200,000 CYCLES
6. TRAVEL: 0.15 ± 0.1 mm
7. CONTACT RATING: 12 VDC, 50mA
8. CONTACT RESISTANCE: 1Ω MAX
9. INSULATION RESISTANCE: $100M\Omega$ MIN. @ 500 VDC
10. BOUNCE MAX: 10m SEC MAX
11. DIELECTRIC STRENGTH: 250 VAC FOR 1 MINUTE
12. OPERATING TEMPERATURE: -40°C to 85°C
13. STORAGE TEMPERATURE: -40°C to 85°C
14. PACKAGING: REEL 2500 PCS. PER
15. ▲ DENOTES CRITICAL PARAMETER



REV	ECO NO	DESCRIPTION	DATE	BY	E-SWITCH®				OBJECT ID
E	ECO-101075	Reel from 2200 to 2500	07/14/22	MW	TITLE TL4105AF160QG				000017355
					SCALE	DATE	DR	DWG	REV
THE INFORMATION CONTAINED IN THIS DOCUMENT IS PROPRIETARY TO E-SWITCH AND IS NOT TO BE COPIED OR TRANSFERRED					8:1	4/18/2011	BMA	P004010	E