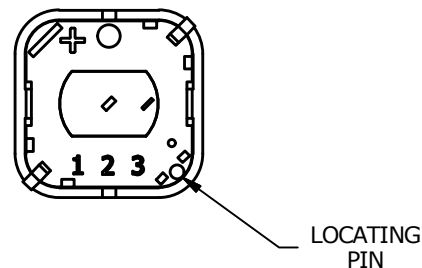
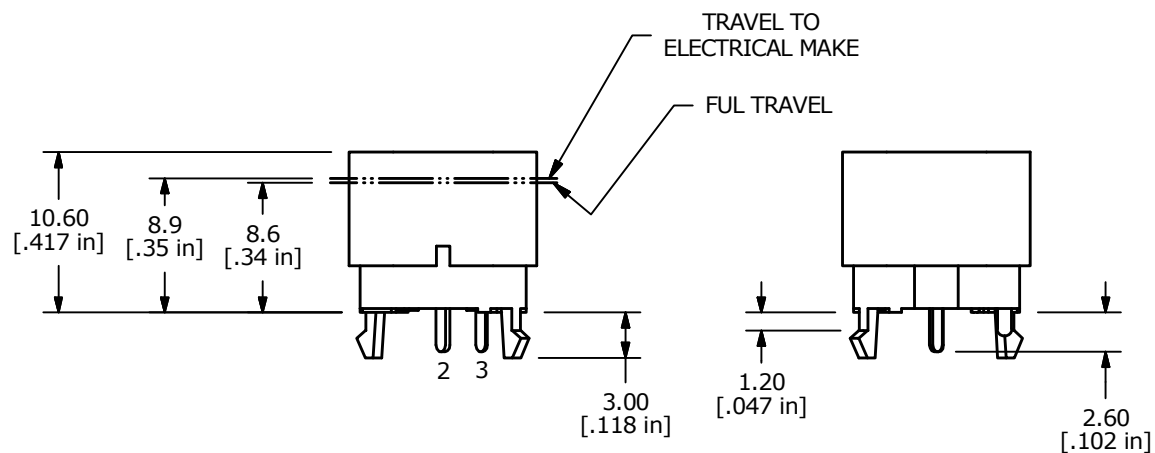
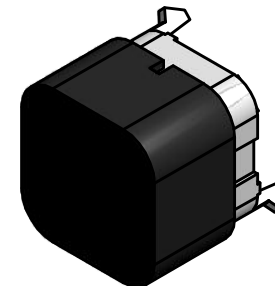
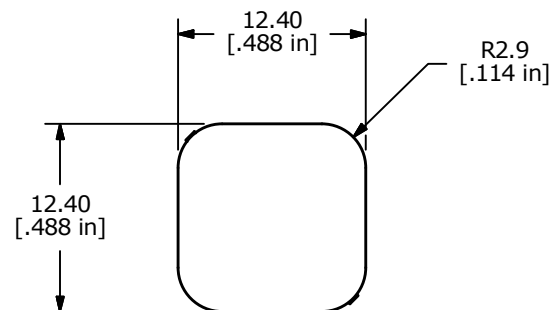



## NOTES:

1. ALL DIMENSIONS IN MM [INCH]
2. GENERAL TOLERANCE: X.X =  $\pm 0.4$   
X.XX =  $\pm 0.25$
3. TERMINAL NUMBERS FOR REF. ONLY
- ▲ 4. RATING: 30mA @ 28VDC
5. TRAVEL: ELECTRICAL MAKE:  $8.9 \pm 0.2$ mm  
FULL TRAVEL: 8.6mm
- ▲ 6. OPERATING FORCE:  $490 \pm 150$ gf
7. ELECTRICAL LIFE: 20,000 CYCLES
8. ▲ DENOTES CRITICAL PARAMETER
9. CONTACT MATERIAL: SILVER
10. 2002/95/EC (RoHS) COMPLIANT



					 <b>E-SWITCH®</b>				
B	22430	update Note 4	8/9/16	MW	TITLE PB300STQ				
A	22255	New Release	4/4/16	rc					
REV	PCR NO	DESCRIPTION	DATE	BY	SCALE	DATE	DR	DWG	REV
THE INFORMATION CONTAINED IN THIS DOCUMENT IS PROPRIETARY TO E-SWITCH AND IS NOT TO BE COPIED OR TRANSFERRED					2:1	4/4/2016	rc	T003000	B