

## Sonos Voice

The Sonos voice range combines normal sounder signals with a clear, synchronised voice message to help reduce confusion and distress during an active alarm.

Units are available with 7 pre-programmed messages, selected from an extensive message library covering almost any conceivable application. Bespoke messages are also available on request.

These sounders can be used in small to medium fire alarm system installations where up to 7 messages can be transmitted over two wires via a message controller. (See page 13.)

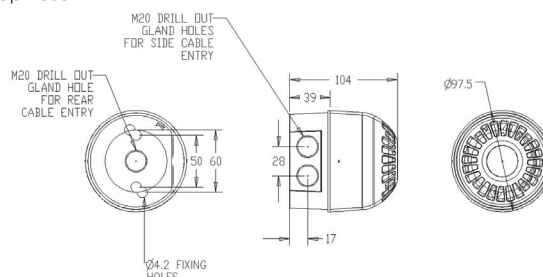
Both Sonos voice enhanced variants are available as sounders or sounder-beacons in either red or white, with shallow or deep base (IP65) options for indoor and outdoor applications.

### Features

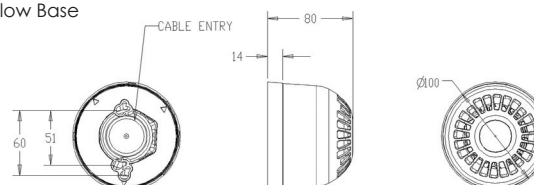
- Choice of up to 7 messages
- 106dB (A) tone and 80dB (A) message outputs
- Extensive message library or bespoke messages available
- Automatic synchronisation
- Easily retro-fits to existing installations
- Capable of playing up to 7 messages over two wires via a message controller\*
- Includes alert tone
- High efficiency LED Beacon option



Deep Base



Shallow Base



### Specifications

Part No.	Colours	Audibility at 1m Dimensions:	Tones	Voltage	Current (tone dependent)	Messages
PSV-0010 shallow base	Red	Up to 106dB (A)	32	24V DC	26mA (max)	3
PSV-0009 deep base	Red	Up to 106dB (A)	32	24V DC	26mA (max)	3
PSV-0012 shallow base	White	Up to 106dB (A)	32	24V DC	26mA (max)	3
PSV-0011 deep base	White	Up to 106dB (A)	32	24V DC	26mA (max)	3
PSV-0013 deep base	Red base, red lens	Up to 106dB (A)	32	24V DC	30mA (max)	3
PSV-0014 shallow base	Red base, red lens	Up to 106dB (A)	32	24V DC	30mA (max)	3
PSV-0015 deep base	White base, clear lens/red LED	Up to 106dB (A)	32	24V DC	30mA (max)	3
PSV-0016 shallow base	White base, clear lens/red LED	Up to 106dB (A)	32	24V DC	30mA (max)	3

\*Note: PNV-0022 Message Controller for Fire Alarm Systems; PNV-0004 Message Controller for Gas Extinguishing Systems

**IP Rating:** IP65 (deep base) IP21 (shallow base) **Operating Temp:** -25°C to +70°C **Construction:** Flame Retardant Polycarbonate

**Cable Entries:** Deep Base: 2 x 20mm cable glands **Weight:** 0.22kg (shallow base) 0.25kg (deep base) **Compliance:** EN60950

**klaxon**  
Signalling Solutions