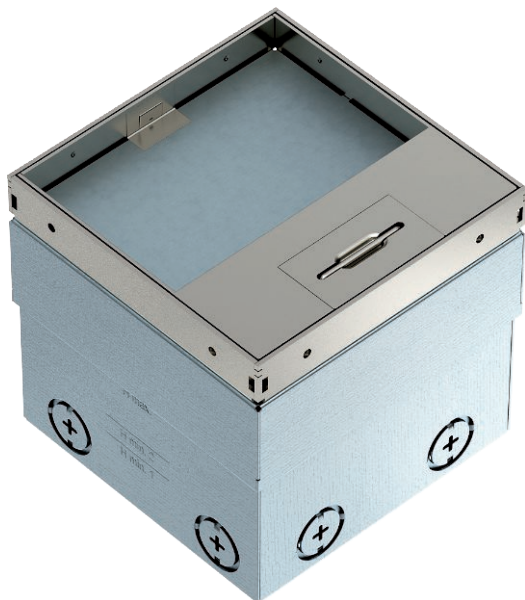


Technical data sheet

**UDHOME2 floor socket, with floor covering recess,
double VDE, stainless steel**
Item no. 7368324



Square floor socket for use in dry-care cavity and screed floors in indoor areas. Installation housing with pre-marked insertion openings for pipes (M20/M25). Cover adjustable to top edge of floor covering using four height-adjustment supports. The minimum installation depth is 110 mm, the height-adjustment range is +25 mm.

Frame and cover made of stainless steel and visible in the floor covering. The load-bearing capacity of 15 kN is only guaranteed when in an unused state.

The scope of delivery contains a double protective contact socket.

Up to two modular data sockets can be installed in the optional mounting support.

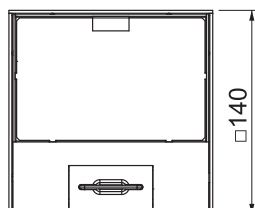
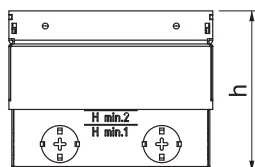


A2 Stainless steel, rustproof

Master data

Item no.	7368324
Type	UDHOME2 GV15V
Description 1	Floor socket
Description 2	with double VDE socket
Dimension	140x140x110
Material	Stainless steel, material A2
Material symbol	A2
Smallest sales unit (VG)	1 Piece
Weight	230,00 kg/100 pc.

Technical data



Length	140,00 mm
Width	140,00 mm
Height	110,00 mm
Dimension h	110,00 mm
Number of installable devices	2
Cable outlet version	Swivellable cord outlet
Floor covering thickness	15,00 mm
Floor covering protection frame	<input type="checkbox"/>
Floor care	Dry
Version for	Square
Application when used	6.101.1 Dry floor care
Application when unused	6.101.1 Dry floor care
Floor height	110-135 mm
Device support to accept mounting boxes	<input type="checkbox"/>
Suitable for wet care	<input type="checkbox"/>
Suitable for screed-flush closed underfloor ducts	<input type="checkbox"/>
Suitable for screed-covered underfloor ducts	<input type="checkbox"/>
Suitable for raised floor installation	<input checked="" type="checkbox"/>
Suitable for cavity floor installation	<input checked="" type="checkbox"/>

Technical data sheet

UDHOME2 floor socket, with floor covering recess,
double VDE, stainless steel
Item no. 7368324



Technical data

Suitable for underfloor ducts	<input type="checkbox"/>
With floor covering recess	<input checked="" type="checkbox"/>
Nominal size for device installation units	2
Standard	EN 50085-2-2
Opening mechanism	Handle
Frame version	Floor covering contact edge
Heavy-duty version	<input type="checkbox"/>
Protection rating (IP) when used	IP20
Protection rating (IP) when unused	IP40
Protection rating IK code	IK10
Approvals	
Vertical load, small area	to 3,000 N