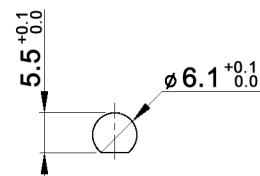


PANEL MOUNTING



CONTACT ARRANGEMENT

code for x	function	connected terminals
D	ON - ON	1-2 alternating with 2-3
F	ON - MOM	rest position: 1-2; pushed down: 2-3

Specifications:

Contact rating:	3A, 250V AC / 6A, 125V AC 4A, 30V DC / 5A, 12V DC 6A, 6V DC
Contact resistance:	20mOhm max.
Insulation resistance:	1 000MOhm min. at 500V DC
Dielectric strength:	1 500V, 50Hz for the duration of 1 minute
Operating temperature:	-45°C to +140°C
Mechanical life:	min. 30 000 cycles
Soldering conditions:	hand-soldering: max.: 420°C, 3sec., 60W auto-soldering: max.: 270°C, 5sec.
Mounting instruction:	max. torque: 49Ncm
IP rating:	IP67
Material:	Terminal / contact: brass, silver plated Case: DAP Housing: stainless steel, CNS9265 Bushing: copper alloy, C3604BD nickel plated Actuator: copper alloy, C3604BD chrome plated
Included accessories:	1 pc. nut M6x0.75, nickel plated, 9mm wrench size 1 pc. tooth washer 1 pc. O-ring, silicone

Compliance: RohS II (2011/65/EU)

Tolerances: 0.00: ±0.25mm 0.0: ±0.40mm			Date	Name	MPE 106 x	
			06/09	dr		
Contact arrangement	07/15	dr	knitter-switch			Page
Dimension	01/11	dr				
Modifications	Date	Name				1/1

30 18 47